



JETI MIRA LED

Award-winning flatbed printer that relies on UV LED curing to offer you impressive print quality on a wide variety of media. Accelerate the printing process to 248 m²/h, use the dockable roll-to-roll extension or opt for 3D Lens Technology printing whenever you need to.



Jeti Mira LED

Print & Prepare mode for enhanced productivity



A versatile printing solution

This award-winning flatbed printer now relies on UV LED curing to offer you impressive print quality on a wide variety of media. Accelerate the printing process to 248 m²/h, use the dockable roll-to-roll extension or opt for 3D Lens Technology printing whenever you need to.

The powerful and award-winning Jeti Mira is a moving-gantry flatbed printer specially designed to offer you optimal flexibility. Prints of up to 2.69 m wide, two table versions, LED curing and 3D Lens Technology – the latest Jeti Mira has it all.

Driven by Asanti workflow technology, integrable with cloud service for data exchange PrintSphere and optimized to work with Agfa's high-pigmented UV-inks, the Jeti Mira takes on any challenge. Generating high-quality, six color (CMYKLCm) + white prints, with optional varnish and primer, it perfectly meets the dynamic demands of mid- to high-end sign and display printers.

A true flatbed

The Jeti Mira is a highly reliable and ruggedly built flatbed printer with a roll-to-roll option. Available with a table depth of either 1.6 m or 3.2 m and a table width of 2.69 m, it is suited for even the broadest of jobs. Thanks to its precise moving-gantry architecture, the engine offers you optimal flexibility and high-quality printing, both for rigid and flexible substrates.

Linear motor

With two rows of fast-firing Ricoh MH5420 inkjet print heads, the speedy flatbed printer offers you outstanding productivity. In addition, the Jeti Mira is equipped with a linear motion system which achieves a very precise drop positioning and results in further improvements in image quality. With its UV LED curing, the Jeti Mira brings additional benefits in power consumption and application scope.



In-house decoration

World-class training and support, anywhere you need it

If you purchase an Agfa solution, your operators will get trained directly by Agfa's global support team. Have a question or did you run into an issue? Our experienced service technicians and application experts throughout the globe are available when you need them.



Roll-to-roll option

A versatile, powerful printing solution, the Jeti Mira features an optional roll-to-roll system that can be attached to the front of the flatbed table. It thus reduces the travel distance for print media, decreases the chance of skewing and improves accuracy on the Y axis.

Detach the module to keep it out of your way while performing rigid jobs or just leave it docked, whichever is more convenient for you. The roll-to-roll system fits in perfectly with the moving gantry and allows minimal waste production while printing on flexible media.



Small object printing

'Print & Prepare' mode

Thanks to its 'Print & Prepare' mode, the Jeti Mira allows you to load one side of the table while the other side is printing. As such, this feature reduces downtime and increases your productivity. It's perfect for large boards, smaller boards and double-sided images.

Furthermore, operators working in 'Print & Prepare' mode can rely on a mirrored vacuum system and perfectly symmetrical table, with vacuum sections on both sides of the engine. Confusion over media layout? Not with the Jeti Mira.

Up and running

Its robustness allows the Jeti Mira to meet the demands of a heavy workload. Its ink system – both print heads and ink reservoirs – are temperature controlled, ensuring that your ink hits media at the ideal temperature and no blockages are formed. Thanks to the shuttle's accessibility, maintenance of the print heads has never been easier.

As an Agfa solution, the Jeti Mira incorporates cutting-edge flatbed features and highly-advanced printing technology. It offers you all the advantages of the Jeti GUI system and uses Asanti technology to manage your workflow. It is also perfectly integrable with PrintSphere, Agfa's cloud solution for easy file exchange and production automation.

Industry-leading print quality

The award-winning Jeti Mira produces outstanding print quality in six colors and white. Varnish, primer and 3D Lens Technology printing are optional extras. The 7 pl-droplets produce stunning, detailed images and razor-sharp texts – even with type as small as 4 pt, both positive and negative. The printer's six color setup, further enhanced by intelligent gradient and masking technology, guarantees smooth tonal reproduction.

Saving time, money and the environment with LED UV-curing

- Minimal heat output allows for printing on heat-sensitive substrates such as self-adhesive sheets or stretched PVC materials.
- Higher productivity as LED lamps can be switched on and off instantly.
- A 10,000 hour-life with a consistent UV output throughout, and thus consistent ink curing and image quality.
- Low energy consumption.
- No mercury disposal costs, and no ozone gas to extract.



Jeti Mira LED

Impressive features

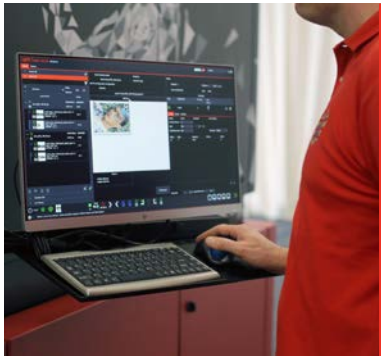
WHITE INK FOR ALL APPLICATIONS

For pre-, post- and sandwich white printing in spot and fill applications – both in flatbed and roll-to-roll mode.

UV LED PRINT TECHNOLOGY

Equipped with air-cooled UV LED lamps for the curing process. These lamps allow you to print on heat-sensitive media and offer major advantages in terms of performance, costs, maintenance, and the environment.

SHUTTLE EQUIPPED WITH ANTI-STATIC BAR AND SAFETY SENSORS



ADVANCED GUI DESIGN

The Jeti GUI system provides the ultimate functionality: cropping, rotating, auto-nesting, scaling, stepping, saving job parameters for reprints and more – all without needing to RIP the file again.



AUTOMATIC HEAD HEIGHT ADJUSTMENT

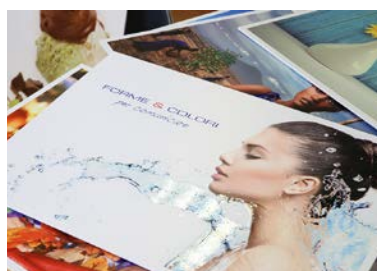
A laser beam detects the media thickness and sends the measurements to the GUI.

UV-CURABLE LED INKS

Always spot on and ideal for printing on heat-sensitive substrates. Specially designed to be compatible with UV LED print technology, which increases ROI, cuts costs, generates extra business and helps preserve the environment.

VARNISH OPTION

Adds a dramatic touch to your print jobs. You can now even create prints with exceptional stopping power through highly-advanced 3D Lens Technology.



'PRINT & PREPARE' MODE

Load one side of the table while the other side is printing. As the printer's table is mirrored, it's easier for operators to position media correctly. Or opt for the highly advanced 'Full Print & Prepare' mode, which enables full use of the printing bed in color mode.

CLOG-FREE WHITE INK PRINTING

No blockages or clogs of the white ink thanks to constant ink recirculation.

REGISTRATION PINS ON EVERY CORNER

Guarantees a precise positioning of substrates, even for double-sided or imperfectly cut media. The pins are operable via the user interface or from a conveniently-located set of activation buttons at each of the four corners.

PRIMER OPTION

For even better adhesion to and durability on difficult substrates.

ACCESS TO PRINT HEAD SHUTTLE FOR EASY MAINTENANCE.



DOCKABLE ROLL-TO-ROLL SYSTEM

Optional for rolls up to 2.05 m (80") wide, directly attached to the front of the printer and with the gantry transported right over it. The small transport distance minimizes media waste and enhances accuracy.

A TRUE MOVING-GANTRY FLATBED

Sturdy, reliable and versatile.

BEST-IN-CLASS AGFA-MADE INKS

The widest color gamut with the lowest ink consumption per square meter, with excellent adhesion and a short curing time. Suitable for a wide variety of indoor and outdoor applications – flexible or rigid, coated or uncoated.

SIX VACUUM ZONES

No curling or skewing with the Jeti Mira – all media stay perfectly flat during printing. All six zones are automatically and independently controlled, and a reverse-vacuum assist option is available for easy post-print removal of substrates. A mirrored layout of the print table ensures perfect clarity when it comes to media positioning.



Vivid colors, high performance

Wide color gamut, no matter the medium

Agfa-made UV inks boast a wide color gamut and high color vibrancy in both indoor and outdoor applications. Providing outstanding adhesion – even on the most difficult substrates – these inks are your best option in terms of flexibility, image longevity and outdoor resistance. All of our UV inks – white and color – offer outstanding, stable jetting performance and deliver the same high-quality results, batch after batch.

Agfa's UV-curable LED inks: always spot on

Relying on LED technology, our specially-formulated UV LED inks can print on heat-sensitive substrates, thus broadening the scope of possible applications. They are both customized and versatile, developed with a view of the many different media they are intended for, as well as the specifications of different print engines. Our inks for flexible media, for example, are perfectly suited for stretchable and bendable materials.

Vivid prints, low ink consumption

Thanks to the high pigment load of our inks and the benefits of Asanti's algorithms, ink consumption per square meter is the lowest on the market. The amount of ink needed being one of the most important factors in calculating the cost of ownership for inkjet engines, this is a true asset that has been acknowledged by multiple awards.

Moreover, this 'thin ink layer' pigment dispersion technology does not mean the Jeti Mira compromises on quality. Quite the opposite is true – and not only does it result in eye-catching prints; it also helps preserve the environment and saves on your budget. In short, these inks offer the best possible price/quality ratio.



3D Lens Technology

Advanced white printing and white ink management

Printing on backlit media? Creating an opaque white background? Using white as a spot color? The Jeti Mira supports white printing in multiple modes (e.g. pre-white, post-white, sandwich white) on both rigid and roll media. Thanks to its stirring functionality, the Jeti Mira keeps the white ink in motion at all times. Constant recirculation flows along the ink lines – all the way to the temperature-controlled printer heads – limiting the risk of ink resetting and lines becoming blocked or clogged.

Compliant to industry norms

The low-odor Anuvia ink sets obtained multiple certifications and comply with a range of industry norms that pertain to the restricted use of chemicals listed by the European Union, to chemical emissions and air quality in indoor applications, to safety for toys regarding heavy metals migration and to the restriction of hazardous substances in electrical and electronic equipment.



In-house decoration - dibond



In-house decoration - paper and wood

Primer option for better surface tension

Difficult substrates – such as polypropylene, PMMA/acrylic, polystyrene, etc. – can pose adhesion and durability challenges for inkjet printing. Opting for the Jeti Mira’s primer option, however, allows you to easily improve surface tension. A quickly-deposited primer ensures better print results – either as a ‘fill’ (the whole area) or ‘mask’ (printed areas only). The UV-cured primer formulation is optimized for the Ricoh MH5420 heads that are incorporated into the Jeti Mira. And because the primer is applied in low-coverage percentages, it hardly influences your cost per square meter of output.

Varnish option and 3D Lens Technology

Looking for something extra to differentiate yourself from the competition? Varnish is the perfect solution. Used as ‘spot’ varnish, it can add a dramatic touch to many different applications, including POP displays, packaging, decorative prints and trade show graphics. Agfa’s UV-curable varnish is compatible with almost all standard UV-printing media and cures to a perfect gloss or semi-gloss sheen.

Want to take it one step further? Create stunning 3D effects with real stopping power. Using a combination of varnish and image manipulation (e.g. printing transparent lenses), the Jeti Mira knows no print limits. This 3D Lens Technology adds depth to your print results by tuning the size of the varnish lenses and the array in which they are printed, as well as by relying on software elements to enhance pictures. 3D printing is a standard feature for Jeti Mira engines with varnish option in the first months. After this trial license, you will be able to opt for a lifetime license.

Wide range of applications

The Jeti Mira prints on a wide variety of media: banners, posters, signage (e.g. traffic or industrial information), exhibit graphics, POP, mock-ups, backlit, front-lit, self-adhesives (labels) etc. It can also be used for niche applications such as DVDs, wood, art reproductions, personalized object printing (e.g. mousepads), party favors, architectural and interior decoration, lenticular printing and more.

Focus on automation

Powered by Asanti

The Jeti Mira is driven by Agfa’s wide-format workflow software Asanti, which controls the entire printing process from prepress to production and finishing. As such, it simplifies, optimizes and automates as many steps as possible, offering you a high-performance solution for increased productivity. Moreover, the smart Asanti algorithms reduce your ink consumption, and consequently, your costs and environmental footprint.

Asanti’s comprehensive integration of file handling, color management and preflighting guarantees error-free jobs ready to send to the appropriate wide-format output devices. It is completed by Asanti StoreFront, a web-to-print solution that lets you create and manage online stores and automatically process print orders.



Integrable with PrintSphere

As a highly-advanced printer powered by Asanti, the Jeti Mira integrates perfectly with PrintSphere, Agfa’s cloud-based service for production automation, easy file sharing and safe data storage. This integrable cloud service offers a standardized way for print service providers to automate their workflows and facilitate data exchange with customers, colleagues, freelancers, other departments and other Agfa solutions.



Extreme productivity. Extreme quality.

Reach new heights in printing quality and productivity for all your inkjet signs and displays. Go beyond current printing standards and produce extremely vivid prints at dazzling speeds. Experience the best of both worlds with Agfa. Outstanding quality has never come at a swifter pace.

Enter a new era of extreme productivity and quality with Agfa’s inkjet printing solutions!

Technical specifications Jeti Mira LED

MODELS	JETI MIRA MG2716 HS LED	JETI MIRA MG2732 HS LED
MEDIA & PRINTING SPECIFICATIONS – RIGID MEDIA		
Maximum width	2.69 m (8.82 ft)	
Maximum length	1.6 m (5.24 ft)	3.2 m (10.49 ft)
Minimum size	DIN A4 (21 cm x 29.7 cm) landscape	
Thickness	Min. 0.2 mm (0.008") – max. 50.8 mm (2")	
Maximum weight	37 kg/m ² (7.57 lb/ft ²)	
Borderless printing	Up to 2.69 m x 1.6 m (8.82 ft x 5.54 ft)	Up to 2.69 m x 3.20 m (8.82 ft x 10.49 ft)
MEDIA & PRINTING SPECIFICATIONS – FLEXIBLE MEDIA		
Max-min print width	2.05 m (6.72 ft) – 330 mm (13")	
Max-min print height	Full roll length – n/a	
Max-min roll width	2.10 m (6.88 ft) – 330 mm (13")	
Maximum length	Depends on total roll weight	
Max-min media thickness	3.2 mm (1/8") – 0.2 mm (1/64")	
Maximum weight	100 kg (220 lb)	
Maximum roll outside diameter	305 mm (12")	
Roll core	7.62 cm (3") (standard) or 15.24 cm (6") (with adapters)	
Media skew	Max. 3 mm on 10 m printing	
Borderless printing flexible media	Up to 2.05 m (6.72 ft)	
PRODUCTIVITY		
Draft mode	248 m ² /h (2669 ft ² /h)	
Express mode	165 m ² /h (1776 ft ² /h)	
Production mode	83 m ² /h (893 ft ² /h)	
Standard mode	43 m ² /h (462 ft ² /h)	
High-quality mode	22 m ² /h (236 ft ² /h)	
High-definition mode	13 m ² /h (139 ft ² /h)	
MEDIA		
Media types	Reinforced vinyl, pressure-sensitive vinyl, canvas, fabrics, foam board, corrugated board, lenticular, tile, drywall, glass, sheet, metal, paper, and more	
PRINT HEADS & INKS		
Print heads	Piezoelectric Ricoh MH5420	
Ink	CMYKcLm + white (optional primer or varnish)	
IMAGE & TEXT QUALITY		
Prints high quality	Up to 920 x 1200 dpi	
Text quality	4 point	
ENGINE DIMENSIONS & WEIGHT		
Flatbed printer dimensions (H x W x L)	1.84 m x 6.25 m x 2.54 m (6 ft x 20.5 ft x 8.33 ft)	1.84 m x 6.25 m x 4.4 m (6 ft x 20.5 ft x 14.4 ft)
Flatbed printer with roll-to-roll unit dimensions (H x W x L)	1.84 m x 6.25 m x 3.05 m (6 ft x 20.5 ft x 10 ft)	1.84 m x 6.25 m x 4.9 m (6 ft x 20.5 ft x 16 ft)
Flatbed printer weight	2776 kg (6120 lb)	3456 kg (7620 lb)
Flatbed printer with roll-to-roll unit weight	3721 kg (8203 lb)	4401 kg (9703 lb)
ELECTRICITY & COMPRESSED AIR		
Electricity	400Y / 230V, 3-phase 50/60 Hz 25 KVA (34A)	
Compressed air	5 cfm continuous air at 100-150 psi (8.3 m ³ /hr at 6.9-10.3 bar).	
SYSTEM INTEGRATION RIP/WORKFLOW SOFTWARE		
Asanti, PrintSphere, third-party rips		